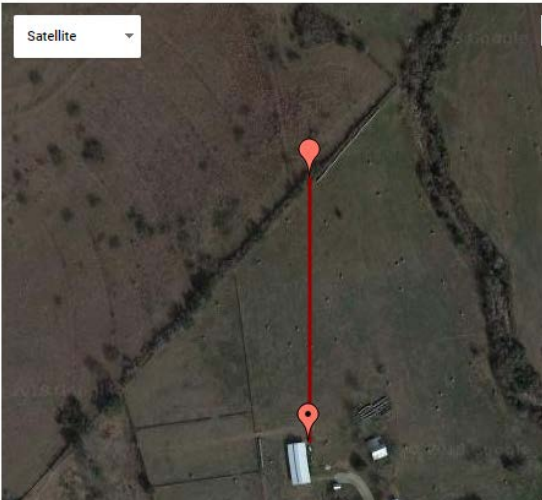
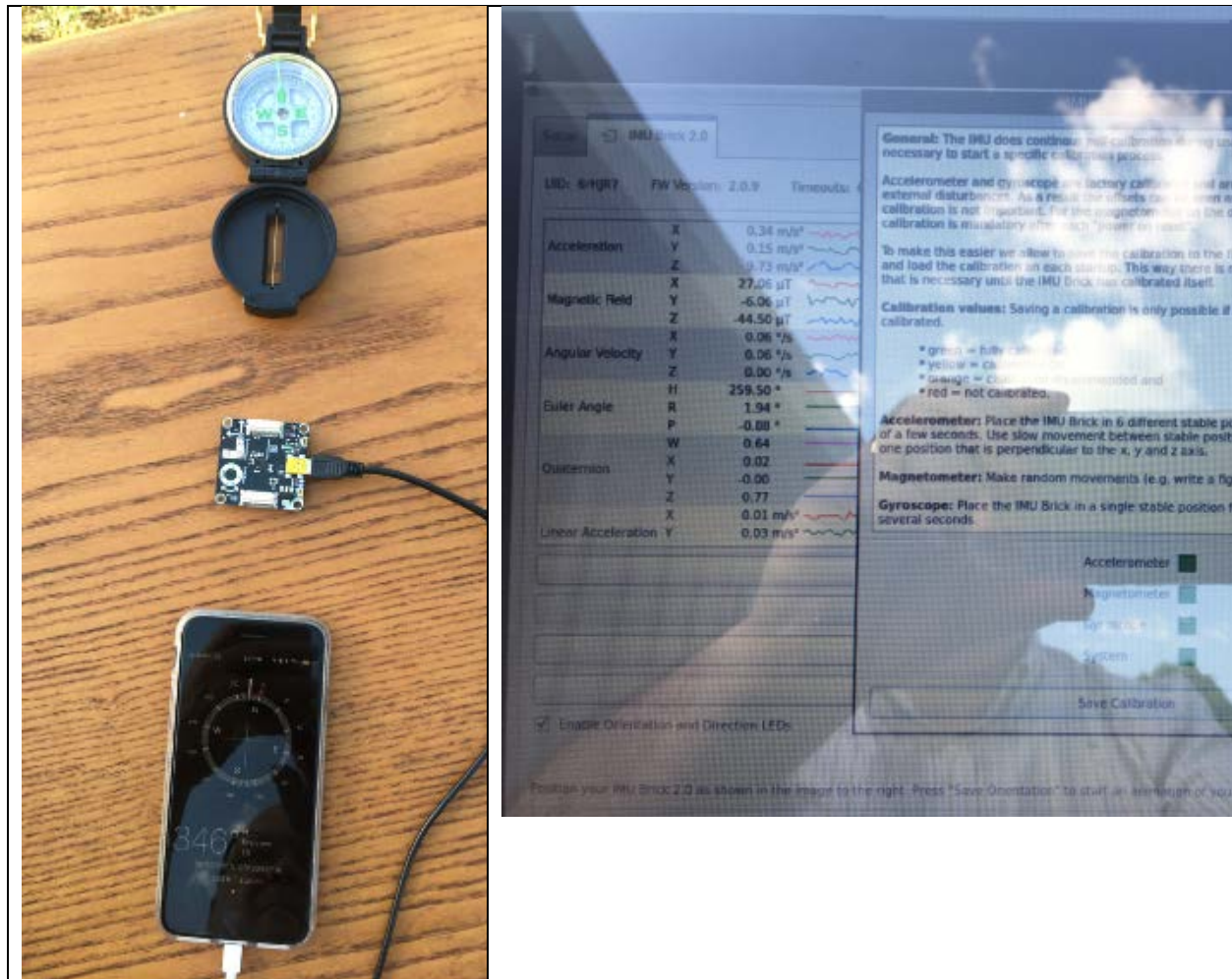


I determined a North heading by plotting two points and entering the lat/lons in <https://www.movable-type.co.uk/scripts/latlong.html>. I then pointed the my compass North along with the Tinkerforge IMU (X axis, tabs up) and my iPhone. I had all green indicators on the calibration page.

Point 1:	<input type="text" value="30.175111"/>	<input type="text" value="-96.511753"/>	Distance:	<b>0.2219</b> Km (138.0 mi)
Point 2:	<input type="text" value="30.177107"/>	<input type="text" value="-96.511745"/>	Initial bearing:	<b>000° 11' 55"</b>
			Final bearing:	<b>000° 11' 55"</b>
			Midpoint:	<b>30° 10' 34" N, 09</b>

... hide map





The euler H is reading 259.5

$$360 - 259.5 = 100.5$$